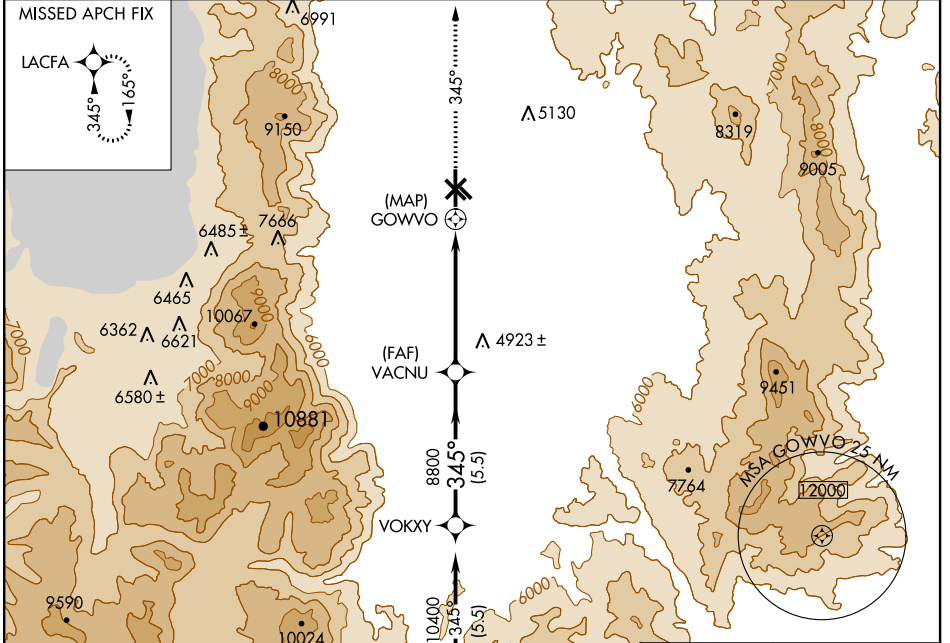


APP CRS <b>345°</b>	Rwy Idg TDZE Apt Elev	<b>N/A</b> <b>N/A</b> <b>4718</b>
------------------------	-----------------------------	---

**▽** NA

MISSED APPROACH: Climb to 12000 via 345° course to LACFA WP and hold.

AWOS-3PT <b>119.325</b>	NORCAL APP CON <b>119.2 279.55</b>	UNICOM <b>123.05 (CTAF)</b>
----------------------------	---------------------------------------	--------------------------------

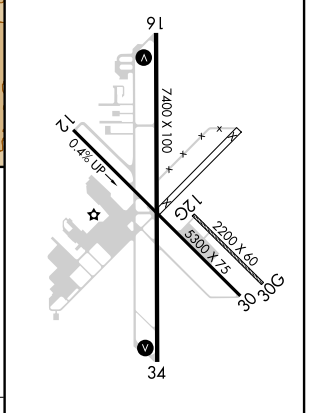


SW-4, 13 NOV 2014 to 11 DEC 2014

SW-4, 13 NOV 2014 to 11 DEC 2014



ELEV 4718



12000 LACFA VGS1 and descent angles not coincident (VGS1 Angle 3.00/TCH 31).

345° crs

GOWWO VACNU VOKXY

8800 10400

6.39° TCH 31

Procedure Turn NA

CATEGORY	A	B	C	D
CIRCLING	6600-1¼ 1882 (1900-1¼)	6600-1½ 1882 (1900-1½)	6600-3	1882 (1900-3)

MIRL Rwy 16-34