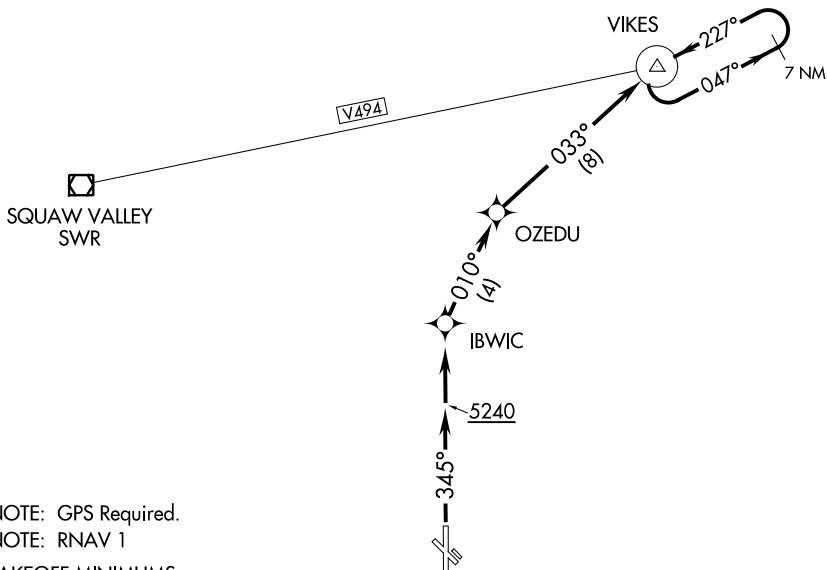


RENO TOWER  
118.7 257.8  
NORCAL DEP CON  
119.2 279.55



NOTE: GPS Required.

NOTE: RNAV 1

TAKEOFF MINIMUMS:

Rwys 16, 12, 30: NA - obstacles.

Rwy 34: Standard with a minimum climb of  
413' per NM to 7800.

TAKEOFF OBSTACLE NOTES:

Rwy 34: Fence 235' from DER, 302' right of centerline,  
7' AGL/4714' MSL.

NOTE: Chart not to scale.

DEPARTURE ROUTE DESCRIPTION

TAKEOFF RUNWAY 34: Climb heading 345° to 5240 then direct IBWIC, then on track 010° to OZEDU, then on track 033° to VIKES, then climb in VIKES holding pattern (hold NE, left turn, 227° inbound) to cross VIKES at or above MEA/MCA for assigned route of flight.